

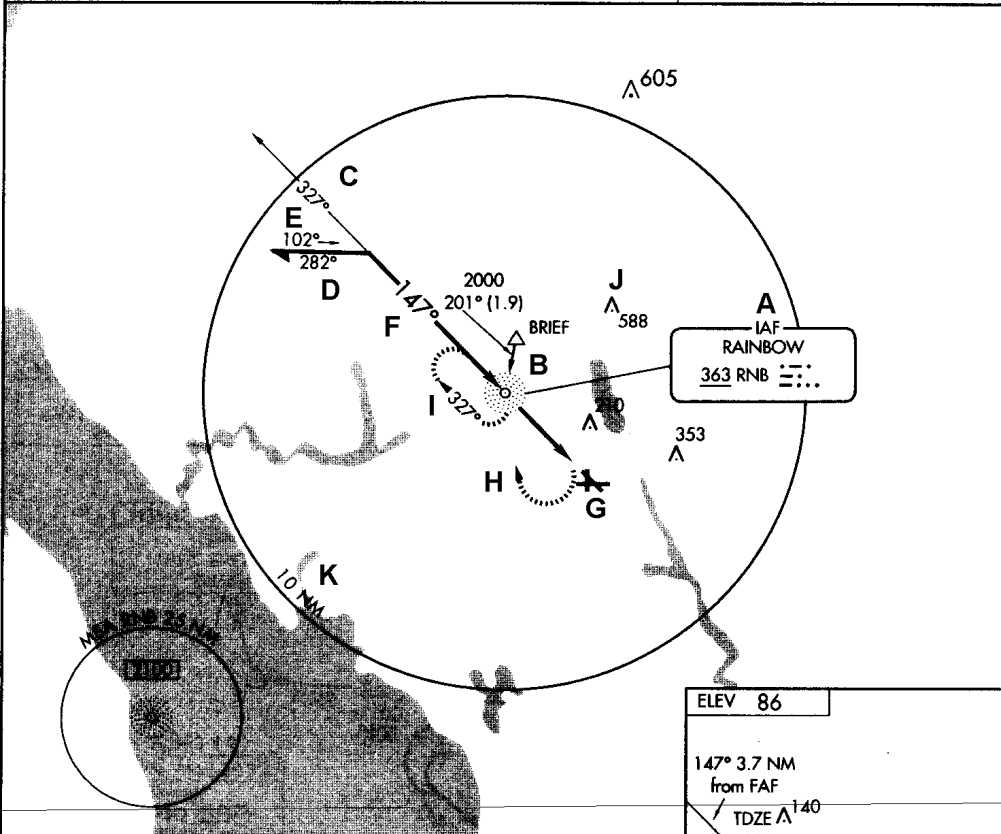
MILLVILLE, NEW JERSEY

AL-891 (FAA)

# NDB or GPS RWY 14 MILLVILLE MUNI (MIV)

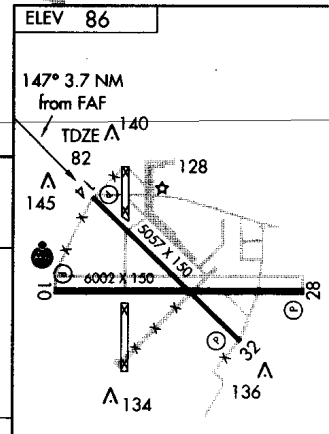
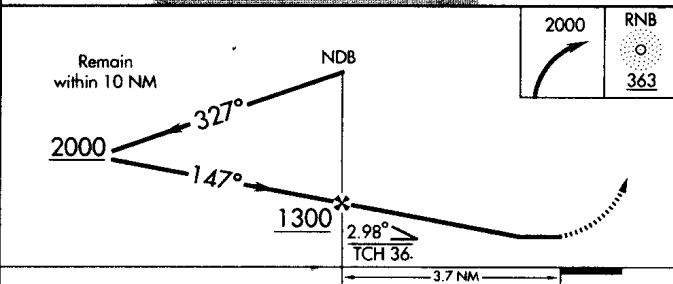
NDB RNB <b>363</b>	APP CRS <b>147°</b>	Rwy Idg TDZE Apt Elev	<b>5057</b> <b>82</b> <b>86</b>
-----------------------	------------------------	-----------------------------	---------------------------------------

<p>▼ MISSED APPROACH: Climbing right turn to 2000 direct RNB NDB and hold.</p>		
ATLANTIC CITY APP CON <b>124.6 327.125</b>	MILLVILLE RADIO <b>123.65 (CTAF)</b> <b>123.0</b>	ASOS <b>128.125</b>



NE-2, 13 JUN 2002

NE-2, 13 JUN 2002



CATEGORY	A	B	C	D
S-14	520-1 437 (500-1)	438 (500-1)	520-1¼ 438 (500-1¼)	520-1½ 438 (500-1½)
CIRCLING	520-1 437 (500-1)	540-1 457 (500-1)	540-1½ 457 (500-1½)	640-2 557 (600-2)

MIRL Rwys 10-28 and 14-32					
FAF to MAP 3.7 NM					
Knots	60	90	120	150	180
Min:Sec	3:42	2:28	1:51	1:29	1:14

MILLVILLE, NEW JERSEY  
Amdt 5A 01305

39°22'N-75°04'W

MILLVILLE MUNI (MIV)  
NDB or GPS RWY 14