

AL-110 (FAA)

LOC I-DAB <b><u>109.7</u></b>	APP CRS <b>070°</b>	Rwy Idg <b>9800</b> TDZE <b>30</b> Apt Elev <b>34</b>
----------------------------------	------------------------	---

ILS or LOC RWY 7L  
DAYTONA BEACH INTL (DAB)

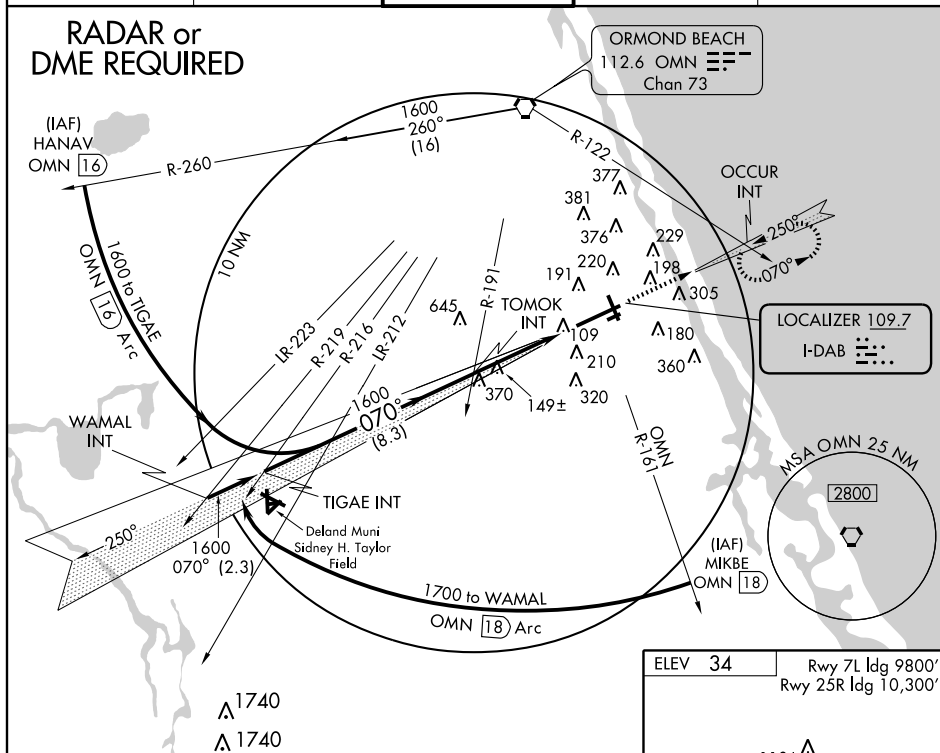
**ASR** If local altimeter setting not received, use Ormond Beach altimeter setting and increase DA to 274 feet and all MDAs 20 feet. Inoperative table does not apply to S-ILS 7L. For inoperative MALSR increase S-LOC 7L Cats A, B, and C visibility to RVR 5000. Visibility reduction by helicopters NA.

MALSR

**MISSED APPROACH:** Climb to 1600 via I-DAB East course to OCCUR Int and hold.

ATIS 120.05	DAYTONA APP CON 125.72 379.95	DAYTONA TOWER 120.7 257.8	GND CON 121.9 348.6	CLNC DEL 119.3
----------------	----------------------------------	------------------------------	------------------------	-------------------

RADAR or  
DME REQUIRED



## Procedure

WAMAL

	160
--	-----

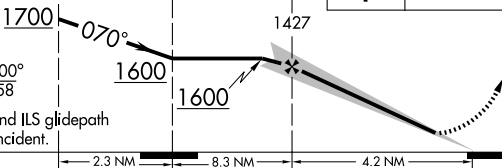
LDAR

---

GS 3.0

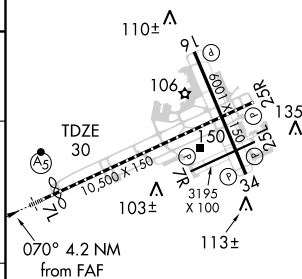
TCH 5

VGSI and ILS glidepath  
not coincident.



CATEGORY	A	B	C	D
S-ILS 7L	230/40 200 (200-¾)			
S-LOC 7L	400/40 370 (400-¾)			
CIRCLING	540-1 506 (600-1)	540-1½ 506 (600-1½)		620-2 586 (600-2)

ELEV 34	Rwy 7L Idg 9800'
	Rwy 25R Idg 10,300'



TDZ/CL Rwy 7L  
HIRL Rwy 7L-25R  
REIL Rwys 16, 25R and 34  
MIRL Rwys 7R-25L and 16-34

FAF to MAP 4.2 NM					
Knots	60	90	120	150	180
Min:Sec	4:12	2:48	2:06	1:41	1:24

DAYTONA BEACH, FLORIDA  
Amdt 30 08157

29°11'N-81°03'W

DAYTONA BEACH INTL (DAB)  
ILS or LOC RWY 7L

SE-3, 31 JUL 2008 to 28 AUG 2008

SE-3, 31 JUL 2008 to 28 AUG 2008